

# Caliper Type Micrometers

**SERIES 343, 143**

## Technical Data

Accuracy: Refer to the list of specifications.  
(excluding quantizing error for digital models)  
Resolution\*: 0.001mm or .00005"/0.001mm  
Graduation\*\*\*: 0.01mm/0.001"  
Flatness: 0.3μm/0.00012"  
Parallelism: (3+R/75)μm, R = max. range (mm)  
[.00012"+.00004(R/3)]" R = max. range (inch)  
fraction rounded down

Measuring faces: Carbide

Display\*: LCD

Battery\*: SR44 (1 pc.) **938882**

Battery life\*: Approx. 1.2 years under normal use

\*Digital models \*\*Analog models

## Functions of Digital Model

Origin-set, Zero-setting, Automatic power ON/OFF, Data hold, Data output, inch/mm conversion (inch/mm models)

Alarm: Low voltage, Counting value composition error

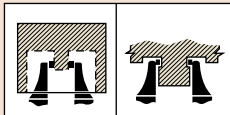
## Optional Accessories for Digital Model

**05CZA662**: SPC cable with data switch (1m)

**05CZA663**: SPC cable with data switch (2m)

**06ADV380B**: USB Input Tool Direct with data switch (2m)

**02AZD790B**: SPC cable for U-WAVE water-proof model (160mm)



## FEATURES

- With Ratchet Stop for constant force.
- SPC output (series 343).



143-101

343-250

## SPECIFICATIONS

Metric	Digital model	
Range	Order No.	Accuracy
0 - 25mm	<b>343-250</b>	±5μm
25 - 50mm	<b>343-251</b>	±6μm
50 - 75mm	<b>343-252</b>	±7μm
75 - 100mm	<b>343-253</b>	±8μm

Metric		
Range	Order No.	Accuracy
0 - 25mm	<b>143-101</b>	±5μm
25 - 50mm	<b>143-102</b>	±6μm
50 - 75mm	<b>143-103</b>	±7μm
75 - 100mm	<b>143-104</b>	±8μm
100 - 125mm	<b>143-105</b>	±9μm
125 - 150mm	<b>143-106</b>	±9μm
150 - 175mm	<b>143-107</b>	±10μm
175 - 200mm	<b>143-108</b>	±10μm
200 - 225mm	<b>143-109</b>	±11μm
225 - 250mm	<b>143-110</b>	±11μm
250 - 275mm	<b>143-111</b>	±12μm
275 - 300mm	<b>143-112</b>	±12μm

Inch/Metric	Digital model	
Range	Order No.	Accuracy
0 - 1"	<b>343-350</b>	±.00025"
1" - 2"	<b>343-351</b>	±.0003"
2" - 3"	<b>343-352</b>	±.00035"
3" - 4"	<b>343-353</b>	±.0004"

Inch		
Range	Order No.	Accuracy
0 - 1"	<b>143-121</b>	±.00025"
1" - 2"	<b>143-122</b>	±.0003"
2" - 3"	<b>143-123</b>	±.00035"

## DIMENSIONS

Unit: mm

Range	L	a	b	c
0 - 25mm	59.8	31.8	10.6	28.6
25 - 50mm	84.8	31.8	10.6	28.6
50 - 75mm	109.8	31.8	10.6	28.6
75 - 100mm	134.8	31.8	10.6	28.6
100 - 125mm	159.8	31.8	10.6	28.6
125 - 150mm	184.8	31.8	10.6	28.6
150 - 175mm	209.8	31.8	10.6	28.6
175 - 200mm	234.8	31.8	10.6	28.6
200 - 225mm	255.8	27.8	14.5	32.5
225 - 250mm	280.8	27.8	14.5	32.5
250 - 275mm	305.8	27.8	14.5	32.5
275 - 300mm	330.8	27.8	14.5	32.5

Range	L	a	b	c
0 - 25mm	55.5	27.5	10.6	32.9
25 - 50mm	80.5	27.5	10.6	32.9
50 - 75mm	105.5	27.5	10.6	32.9
75 - 100mm	130.5	27.5	10.6	32.9